



KDI SCHOOL

263 Namsejong-ro, Sejong-si, 30149, Republic of Korea
www.kdischool.ac.kr

KDI SCHOOL

KDI School of Public Policy and Management



The unique value of KDI School

KDI School is a truly unique academic institute that continues to transform and innovate itself in the pursuit of developing global leaders capable of spearheading balanced growth all over the world. Take a closer look at each and every value the School has to offer, and you will see the reason why you should build your future with KDI School.

19

KDI School was established 19 years ago

119 70

Largest multinational (119 countries) alumni network in Korea (More than 70% from government ministries)

41 32 12 12 3

Affiliation of current domestic students as of 2015: public officials 41%, public corporations 32%, private corporations 12%, college graduates 12%, NGO/IGO 3%

70 190

More than 190 foreign students selected from over 70 countries annually (194 students from 77 countries in 2015)

400

More than 400 newly admitted students annually (386 new students as of 2015)

2600

More than 2,600 domestic alumni members

1997.12

KDI School of Public Policy and Management established

386

8

50

More than 50% of the student body consists of international students

1

KDI is the no. 1 think-tank in Asia. It ranks 8th in the world (among non-US institutes)

100

100% of the student body receiving scholarships

2014. 7

Designated as the GDLN Global Secretariat First Master of Public Policy program outside the United States accredited by NASPAA

119 1500

More than 1,500 international alumni members from 119 countries

51

Distribution of current international students by continent as of 2015: Asia 51% Africa 31%, Americas 12%, Oceania 6%

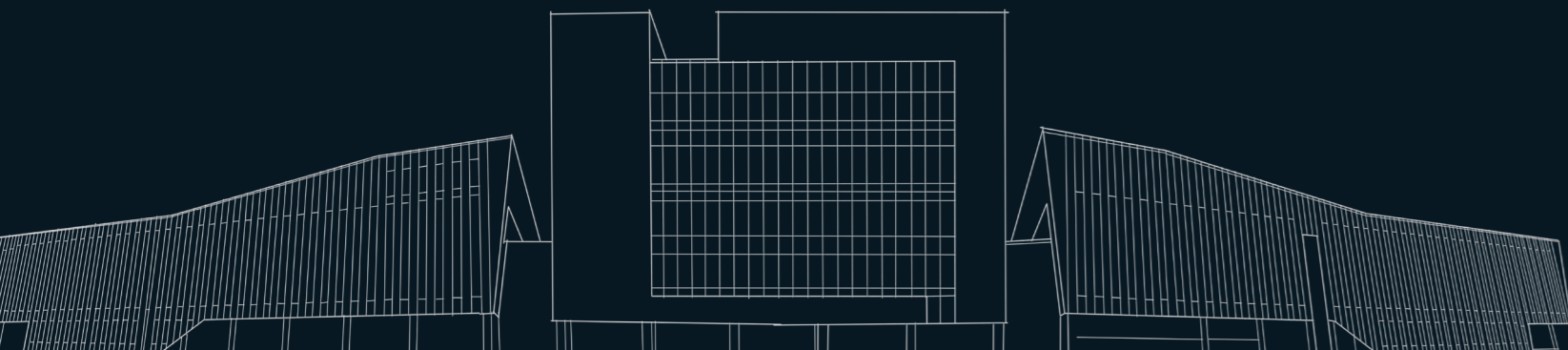
31

12

6

100

Classes delivered 100% in English



Missions

KDI School aims to produce international experts equipped with theoretical knowledge as well as practical skills in the field of development economics and public policy.

KDI School also aims to develop future leaders capable of coping with the rapidly changing international environment and exercising global leadership in every sector of our society.



Contents

Why KDI School
KDI School History
Welcoming Message

Premier Education 12

Academic Programs Overview

Master's Programs

- MPP (Master of Public Policy)
- MDP (Master of Development Policy)
- MPM (Master of Public Management)
- Concentrations

Ph.D. Programs

Faculty

Global Perspective 30

International Exchange and Career Development Programs

Capacity Building Center

Development Research and Learning Network

Research and Learning Resource Center

Worldwide Network 36

Student & Alumni Profile

Overseas Partner Institutions

Extensive Support 42

KDI School in Sejong City

Campus Life & Information

Social Activities

Alumni Recollection

Scholarship Opportunities

Admissions



Why KDI School



Vibrant Education Program

- Dynamic and vibrant education program delving into the experiences and the assets of Asia's top think-tank, the Korea Development Institute (KDI)
- Think Tank Rankings of KDI : 1st in Asia, / 8th among Non-US Institutes (2015 Global Go To Think Tank Rankings, Univ. of Pennsylvania)
- Education based on experiences of systematic research on global development and consultation to developing nations

NASPAA Accreditation

- KDI School received accreditation from NASPAA for its MPP program
- First NASPAA accreditation in Korea

Top-notch Faculty

- Faculty members composed of Ph.D.s from the world's best institutions
- Multi-national diversity, including faculties from the US, China, Greece, Uzbekistan, etc.

Extensive Scholarship

- All international students receive full scholarship.
- More than 95% of international students receive full scholarship including tuition waiver and monthly stipend (app. \$1,000)

Outstanding Education Service

- Offers diverse e-learning opportunities as the Korean Center of the World Bank Global Development Learning Network
- Designated as an APEC Education Hub
- Offers OECD and KSP Seminars, co-education program with Korean Central Officials Training Institute, special lecture, etc.

Broad Global Partnership (50 Institutes / 22 Countries)

- Global Master's Program (GMP)
1 year at the KDI School, 1 year at a partner school to gain two master's degrees
Partner schools include renowned schools including Cornell, Duke, Michigan State, Syracuse, Chicago University

Diverse Student Body

- Truly international environment with international students representing over 50% of the student body
- Over 190 international students from more than 70 countries around the world, creating a unique multi-cultural environment
- 2015 international student composition : Government 59%, Public Org. 6%, Private Corp. 18%, College Graduates 7%, NGO/IGO 10%

Globe-spanning Alumni Network

- Over 2,600 Korean alumni working in a variety of fields including the government, public organizations, finance, media, private corporates, NGOs and international organizations
- Over 1,500 international alumni from 119 countries serving as global leaders all over the world

Career Development Program

- Internship and recruitment opportunities by diverse public organizations
- Alumni mentoring
: Reviewing resumes and interest, KDI School matches students with an alumnus who can provide advice for their career.

Comprehensive Research and Educational Data

- Operates K-Developedia, an online repository compiling case studies on Korea's miraculous development
- Offers blended learning programs incorporating international development curriculum with e-learning
- Provides e-learning programs conveying the vivid nature of Korea's economic development by interviewing people from actual fields

KDI School History

Established with authorization from the Ministry of Education and Human Resources Development **12 1997**

Classes begin (4 programs) **03 1998**
Dr. Lim, Gill-Chin inaugurated as the first dean **07**

Appointed by KOICA (Korea International Cooperation Agency) as partner institution **01 1999**
Official name changed from the KDI School of International Policy and Management to the KDI School of Public Policy and Management **11**
Designated as an APEC Education Hub **12**

Global Master's Program (GMP) launched, enabling students to acquire dual degrees both at KDI School and abroad **02 2000**
Special Program on Economic Policy-Making launched **09**
The Center for National Leadership renamed into the Center for Executive Education **10**

Designated as the Korean Hub of the World Bank GDLN (Global Development Learning Network) **01 2001**
Ph.D. Program launched **02**
Dr. Chung, Chin-Seung inaugurated as the second dean **07**

Master's Programs consolidated into the Master of Public Policy (MPP) and Master of Business Administration (MBA) programs **02 2002**
KDI School Alumni Association established **10**

E-Learning Program Launched **01 2003**
International Master's Program in Practicing Management (IMPM) established **12**

Master in Foreign Direct Investment (MFDI) established **03 2004**
Dr. Chung, Chin-Seung inaugurated as the third dean **04**

2005 05 Digital Library opened

2006 02 Master in Asset Management (MAM) established

2007 01 OECD Seoul Center opened
10 Dr. Hahm, Sang-Moon inaugurated as the fourth dean

2010 01 MPP program expanded to MPP, MPP/ED, and MPP/PM
12 Dr. Nam, Sang-Woo inaugurated as the fifth dean

2011 10 Designated as a participant for the "Campus Asia" project

2012 01 Master's program restructured into MDP and MPP, Ph.D. in Development Policy established
12 Dr. Nam, Sang-Woo inaugurated as the sixth dean

2013 05 Received "Outstanding Institution Award" and "Outstanding Leadership Award" from National Research Council For Economics, Humanities and Social Sciences
08 Designated as participant in the Korea EU Industrialized Countries Instrument Education Cooperation Program

2014 07 Assumed the role of the Global Development Learning Network (GDLN) Global Secretariat from the World Bank, MPP program received accreditation by NASPAA-The Global Standard in Public Service Education
12 Dr. Chun, Hong Tack inaugurated as the seventh dean

2015 01 Master of Public Management (MPM) launched
03 Received accreditation from the Ministry of Science, ICT and Future Planning
06 Obtained certification of graduate school evaluation by the Ministry of Education

2016 05 Received an "Outstanding Institution Award" from National Research Council for Economic, Humanities, and Social Sciences



KDI SCHOOL





Message from the President

KDI School of Public Policy and Management was founded as an affiliated academic institution of the Korea Development Institute, a premier government economic think-tank at the forefront of social science research for the past 45 years. Drawing from the resources of the Institute, KDI School provides exceptional education that combines current academic theories with comprehensive and innovative practical research to support the national vision and other key policy agendas.

Since its inception 19 years ago, KDI School has achieved remarkable growth and earned prestige nationally and among emerging Asian countries as the leading graduate school in the field of public policy. We place a major emphasis on enhancing the capabilities of public sector managers to effectively diagnose and seek solutions for policy issues. Simultaneously, we maintain a keen focus on successfully managing national affairs through a heightened understanding of the rapidly evolving private sector. To date, we have produced over 4,100 leaders in the public and private sectors.

With a vision to establish itself as the world's finest public policy school, KDI School has adopted a new educational model focusing on two areas: to foster world-class leaders equipped with academic as well as practical expertise, and to provide systematic research and education especially on the processes of economic development. Furthermore, we are launching an integrative program in economic development strategy utilizing our education and research to support official development assistance envisioned by the Korean government, which hosted the Seoul G20 Summit in 2010.

On behalf of KDI School, I look forward to welcoming talented and promising individuals who aspire to contribute to national and international development, cooperation, and co-prosperity

KIM, Joon Kyung
President, KDI School of Public Policy and Management

Message from the Dean

KDI School of Public Policy and Management opened in March 1998 with the mission of fostering global leaders in the public and private sectors at home and abroad. Since then, KDI School has achieved remarkable growth with its inaugural group of 55 students increasing to more than 400 in 2016. The quality of KDI School's educational programs and faculty now rivals other internationally renowned institutions, and in 2014 KDI School's MPP program was accredited by Network of Schools in Public Policy, Affairs and Administration (NASPAA). This was the first NASPAA accreditation in Korea, and the second outside the US.

For the past 19 years, 2,600 Korean students who play active roles in diverse sectors including government, public agencies, finance, media, other enterprises, and international organizations have graduated from KDI School. Over 1,500 of KDI School's international alumni are also working in the front lines of their respective fields, creating a global network spanning 119 countries.

KDI School, by securing a faculty pool with outstanding policy research records, strives to create a rich and interdisciplinary curriculum which combines state-of-the-art theories and practices of policy making and implementation. Moreover, KDI School's student body with diverse professional and cultural backgrounds provides an open educational environment to nurture international perspectives and global leadership.

The KDI School of Public Policy and Management has now comfortably settled in Sejong City. We will channel our best efforts to provide cutting-edge educational environment and systematic student support. KDI School remains committed to transforming our students into global leaders with the capacity to successfully tackle pressing issues in international politics and global economy. Come and pursue your dreams with us. Your success is our goal and to achieve it is our priority.

CHUN, Hong Tack
Dean, KDI School of Public Policy and Management



No.1

World class faculty with internationally recognized academic achievements and experience in the field

With a trimester system (three semesters per year), students can earn their degree within 1.5 years (five semesters)

1.5 years

1st

First Master of Public Policy program outside the United States accredited by NASPAA

100%

Classes delivered 100% in English

152

Premier

Education

A dynamic and vibrant academic curriculum utilizing the intellectual riches of the Korea Development Institute (KDI), accumulated from decades of experience in establishing national policies and agendas

LEE, Taejun
Professor



Academic Programs

Overview

Academic Programs

KDI School of Public Policy and Management offers Master degree programs and Doctorate degree programs. The School's curricula draws extensively from the valuable resources accrued at KDI the research institute. KDI School strives to meet the diverse and professional demands of today's constantly changing society.

Master Degree Programs

KDI School's Master Degree programs are divided into full-time and part-time courses. Full-time students are able to complete their coursework by the end of the first year. They usually spend the second year working on their research component. The minimum time required for graduation is 18 months. Part-time programs use a flexible combination of evening and weekend classes, and students can graduate within two years without interrupting their careers. Both full-time and part-time courses are available for the MDP, MPP and MPM programs. All classes are conducted in English.

Ph.D. Programs

KDI School offers Ph.D. programs in Public Policy and Development Policy. The goal of the Ph.D. program is to prepare qualified candidates and help them produce cutting-edge research in their chosen field. The programs also aim to equip students with the skills they need to ascend to leadership positions in the public or private sector.

	Full-time Program	Part-time Program* (Residents in Korea Only)	Ph.D. Program
Programs	<ul style="list-style-type: none"> MPP: Master of Public Policy MDP: Master of Development Policy MPM: Master of Public Management 		<ul style="list-style-type: none"> Ph.D. in Public Policy Ph.D. in Development Policy
Concentrations	<ul style="list-style-type: none"> Finance and Macroeconomic Policy (MPP) Trade and Industry Policy (MPP) Public Finance and Social Policy (MPP) Regional Development and Environment Policy (MPP) Sustainable Development (MDP) International Development (MDP) Public Administration and Leadership (MPM) Strategic Management (MPM) Global Governance and Political Economy (MPM) 		<ul style="list-style-type: none"> Public Policy Development Policy
Duration	<ul style="list-style-type: none"> Minimum 1.5 years (5 semesters) Coursework: 1st year at the KDI School Thesis Writing: 2nd year in home country 	<ul style="list-style-type: none"> 2 years (6 semesters) 	<ul style="list-style-type: none"> Full-time students : at least 3 years Other students : at least 4 years
Class Schedule	<ul style="list-style-type: none"> Mon-Thurs (08:30 – 18:00) 	<ul style="list-style-type: none"> Mon-Thurs (19:00 – 22:30) Fri (14:00 – 22:30) Sat (9:00 – 17:30) 	
Class Schedule	<ul style="list-style-type: none"> 28,000,000 KRW Scholarship opportunities available 		Total 25,000,000 KRW First year: 15,000,000 KRW Second and third year: 5,000,000 KRW respectively From fourth year: 1,000,000 KRW per year
Class Schedule	<ul style="list-style-type: none"> 45 credits 	<ul style="list-style-type: none"> 45 credits 	<ul style="list-style-type: none"> Qualifying Exam Dissertation 1) Oral Exam 2) Final Defense

* Part-time students may be offered a limited number of courses.



MPP

Master of Public Policy

The Master of Public Policy (MPP) program is designed to provide global perspective and professional expertise in public policy areas. The program is highly regarded both in and outside Korea, particularly among developing countries and government officials. The faculty with outstanding research backgrounds and empirical knowledge offers a leading curriculum that integrates theory and practice. Students are required to take one of the economic policy study areas, and may select additional study areas to cover 39 credits towards their graduation. The highly diverse student composition provides a unique educational environment. Both domestic and international students from all walks of life, including the government, the media, and NGOs are able to share ideas, knowledge as well as experiences, and build a dynamic global network.

Choi, Changyong
MPP Chair



Academic Goals

- Expand policy-maker's capability in policy planning, analysis, and implementation
- Foster professionals in the field of economic and social policies

Program Characteristics

- Build area-specific policy expertise using economics as its base
- Utilize comprehensive and interdisciplinary research capacity of KDI, the top think-tank in Korea



MDP

Master of Development Policy



Based on the KDI's hands-on experience on development policy of over 45 years, the Master of Development Policy (MDP) program offers a curriculum where students can examine various issues of socio-economic development in both theoretical and practical frameworks. The program is specifically targeted for international professionals, including government officials, development consultants, and regional specialists who wish to contribute to development policy-making. The program is also focused on fostering professionals in the field of the official development assistance (ODA). Students must take the required core courses as well as a certain number of courses from Sustainable Development or International Development areas.

Kim, Dong-young
MDP Chair



Academic Goals

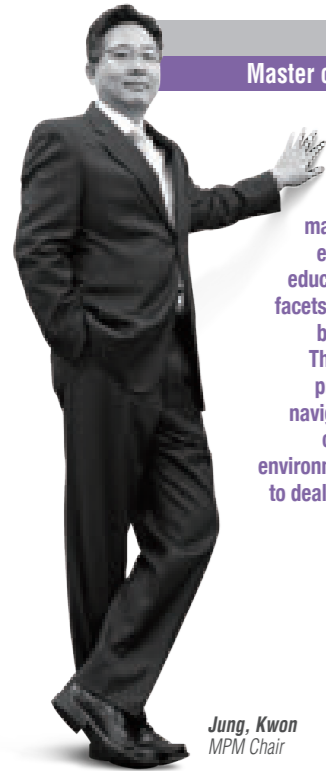
- Build capacity in designing and implementing economic and social policies of developing countries
- Train professionals in the field of sustainable development and international development cooperation

Program Characteristics

- Practical program that combines the theories and practices of development
- Sharing the KDI's over 45-year hands-on experience on development policies in South Korea
- Diverse student body composed of government officials, development consultants, and regional specialists from many developing countries, and South Korea

MPM

Master of Public Management



Jung, Kwon
MPM Chair

The MPM seeks to fulfill policy management needs in today's global environment through an integrative education program that covers various facets of management and leadership in both the public and private sectors. The aim of the program is to nurture professionals who can successfully navigate and manage the complexities of global, private and public sector environments, make preemptive decisions to deal with the challenges, and have the capacity to put them into action.



Academic Goals

- Improve comprehensive problem solving skills in public administration and management, with the help of reinforced understanding of global, private and public sector environments
- Produce high-quality public workforce capable of policy design and execution

Program Characteristics

- The main target is public workforce from government officials and public sector workers
- Interdisciplinary convergence program of public administration, private sector management and global governance



KIM, Soanhee
Professor

Concentrations

MPP Finance and Macroeconomic Policy (FM)

The concentration on Finance and Macroeconomic Policy aims to help students understand the theory, the practice, and the policy issues in the areas of macroeconomics and finance. Target students include mid-career professionals in finance ministries, central banks, financial supervisory authorities, self-regulatory agencies, and others who aspire to work in such institutions. The rich list of finance courses can also meet the needs of students from the private sector. Upon completion, students are expected to have a full understanding of two key agendas in recent G-20 summits: global imbalance and international financial regulatory system.

Selected Courses Offered:

Aid and Development
Central Banking: Monetary Policy Strategy
Challenges and Governance in Global Financial Market
Corporate Financial Policy
Credit Market and Risk Management
Financial Accounting
Financial Instruments and Markets
Financial Statement Analysis and Valuation
International Financial Policy
Introduction to Financial Analysis
Investment Management
Macroeconomic Policy
Pension and Personal Finance

MPP Trade and Industry Policy(TI)

In this era of globalization, no country can enjoy economic prosperity without engaging in international trade. While domestic industries struggle to adjust themselves in the global market, industrial policy can facilitate the process. This concentration aims to offer theoretical knowledge and practical skills in the field of international trade and industrial policy. Legal and institutional arrangements in the world trade will be analyzed in the context of contemporary issues such as FTA, FDI, international trade negotiations, dispute resolutions, and etc. Target students include mid-career professionals in trade-related ministries and business entities or international organizations, as well as those students who aspire to work in such institutions upon graduation.

Selected Courses Offered:

Competition: Theory and Practice
Game Theory and Strategy
Industrial Policy and International Trade Regulation
Industrial Policy and Corporate Governance
Industrialization and Economic Development
Korean Economic Development
Law and Economics
Market Economy and Government
Science and Technology Policy
Theory and Policy of International Trade
Trade and Development
Trade and Environment
Trade and Industrial Policy in the Globalization Era
Trade Law and Policy in Practice
Understanding Free Trade Agreements
Understanding the World Trading System

MPP Public Finance and Social Policy (PF)

The market is an indispensable mechanism for efficient resource allocation and long-term growth. The workings of the market, however, are often accompanied by extreme poverty, externalities, information asymmetry, and coordination failures, thereby entrapping vulnerable individuals and communities at a lower end of possible equilibria. To promote efficiency, equity and solidarity is a significant goal of public policy in this light. On the basis of economics and other social science disciplines, this concentration explores ways to tackle these challenges through taxes, government expenditures, and prudent regulations. Target students include mid-career professionals working in the fields of fiscal policy, poverty alleviation, education, healthcare, social insurances, labor protection, and cultural policy.

Selected Courses Offered:

Analysis of Education Policy in Comparative Perspectives
Development and Labor Market Policy
Development and Social Change in Korea
Gender and Development
Global Health and Development
Human Capital and Economic Development
Human Resource Management in Government
Korean Human Development
Labor Market Institution and Policy
Market Economy and Government
Monitoring and Evaluation for Public Policy
Policy Issues in Labor Market
Social Security and Welfare Policy
Welfare Service Implementation
Labor Economics and Public Policy
Public Finance and Public Policy

MPP Regional Development and Environment Policy (RE)

Sustainable Development and Green Growth are keywords in the 21st century development discourse. Leaders in the public sector need to understand the dynamic relations among economic development, environmental protection and societal development. With this concentration, students develop the knowledge and skills to 1) draft regional development projects and policies considering environmental consequences, 2) conduct environmental impact assessments, 3) facilitate stakeholder participation and orchestrate environmental dispute resolution, and 4) understand complex policymaking procedures in regional development and environmental management programs. Graduates may find positions as local or regional development planners and decision makers, environmental analysts in state, national, and international agencies and NGOs, or infrastructure development in the private sector.

Selected Courses Offered:

Cost-Benefit Analysis on Policy and Project Cases
Economic Analysis of Investment Operations
Impact Evaluation Methods
Local Administration and Finance
Planning and Managing Development Projects
Population and Development
Public-Private Partnerships in Infrastructure Development
Real Estate Finance and Public Policy
Regional Development and Public Policy
Seminar on Project Appraisal and Evaluation Cases
Trade and Environment
Urban Economics and Public Policy
Urban Transportation Policy
Urbanization for Economic Development

MDP Sustainable Development (SD)

Sustainable Development is a keyword in the 21st century development paradigm. Leaders who want to make a difference in the world of sustainability need to understand the dynamic relations among the three pillars: economic development, environmental protection and social development. The key issues in SD are (1) Economic development issues such as economic growth, productivity, technology, energy, environmental dispute resolution and climate change, (2) Social development issues such as education, population, gender, social capital, healthcare, human settlement, human rights, and social changes. The target students are professionals and future leaders in public sector, private sector, NGOs, and international organizations.

Selected Courses Offered:

Advanced workshop for Multiparty Negotiation
Agricultural Policy
Analysis of Education Policy in Comparative Perspectives
Credit Market and Risk Management
Development and Labor Market Policy
Dispute Resolution and Negotiation
Economic Analysis of Investment Operations
Economic and Social Transformation of Korea
Entrepreneurship and Innovation
Gender and Development
Global Health and Development
Human Capital and Economic Development
Impact Evaluation Methods
Industrialization and Economic Development
Korean Human Development
Labor Market Institutions and Practices
Managing and Implementing Sustainable Development
Participatory Governance in Public Decision-making
Planning and Managing Development Projects
Population and Development
Productivity and Economic Growth
Real Estate Finance and Public Policy
Regional Development and Public Policy
Science and Technology Policy
Seminar on Project Appraisal and Evaluation Cases
Topics in Political Economy of Development
Urban Transportation Policy
Urbanization in Economic Development

MDP International Development (ID)

How can we align international economic and diplomatic policies with development? Leaders in the public sector need to have an answer for this important question, and this concentration offers theoretical knowledge and practical skills in various fields of study for the question. The key issues in ID are (1) global issues such as ODA, trade, FDI, international finance, international organizations and (2) regional issues such as country or area studies. The target students are mid-career professionals in the relevant field, and others who aspire to work in public sector, NGOs, international organizations, and trade-related private sector.

Selected Courses Offered:

African Economic Development: Issues and Prospects
Aid and Development
Challenges and Governance in Global Financial Market
Democracy, Political Mobilization and Economic Development: Korea's Experience
Economic Development of the Middle East and North Africa
Economic Integration and Cooperation in East Asia
FDI Marketing & Promotion
Fragile State and Development Outcomes
G20 Global Issues
Globalization and National Identity
Industrial Policy and Corporate Governance
Government and Business Groups in Economic Development
Industrial Policy and International Trade Regulation
Institutional Reform in Developing Countries
International Financial Management
International Organizations: Norms and Facts
Issues and Analysis of Global Civil Society
NGOs and Development
Policies for Development
Public Management for International Development
Resource Diplomacy
Topics on Chinese Economy
Trade and Industrial Policy in the Globalization Era
Trade Law and Policy in Practice
Understanding Free Trade Agreements
Understanding the World Economy

MPM Public Administration and Leadership (PA)

There is a growing demand for public administration skills for managing public sector organizations, which are characterized by binding missions and mandates, limited internal capacity, resources constraints, and external political environments. This study area is designed to improve comprehensive problem-solving skills in public administration and management, by reinforcing one's understanding of global and private policy environments through case studies and enhancing one's practical skills in solving real-world problems, including conflict resolution and public sector management.

Selected Course Offered:

Advanced Workshop for Multi-Party Dispute Resolution and Negotiation
Change Management
Corporate Social Responsibility & Business Ethics
Cost-Benefit Analysis on Policy and Project Cases
Democratic Ethics in Public Policy and Administration
Digital Governance Communication
E-Government: Theory and Practice
Government Public Relations
Institutional Reform in Developing Countries
Leadership and Ethics
Managing and Implementing Sustainable Development
Participatory Governance in Public Decision Making
Performance Management and Measurement in the Public Sector
Public Management for International Development
Regulation and Competition
Regulatory Reform and Management

MPM Strategic Management (SM)

This study area aims to equip students with strategic management and leadership skills required for managers in the public and private sector. Strategic Management and Leadership provides students with the theoretical knowledge and practical skills in the field of private sector management, and studies policy implications therein. The classes use case studies of private corporations as well as key success factors within the theoretical framework of management. The courses are designed to nurture experts who are able to contribute to the business development and policy making. Target students include government policy makers, public and private sector managers, and future entrepreneurs interested in this dynamic field.

Selected Courses Offered:

Change Management
Corporate Financial Policy
Corporate Social Responsibility & Business Ethics
Customer Relationship Management
Entrepreneurship and Innovation
FDI Marketing & Promotion
Financial Accounting
Financial Statement Analysis & Valuation
Introduction to Financial Analysis
Marketing in the Public Sector
Negotiation for Management
Strategic Management

MPM Global Governance and Political Economy (GP)

As the challenges of development and public policy are inexorably connected with the forces of globalization, to study them requires an interdisciplinary approach. This concentration focuses on the reciprocity between politics and economics, investigating how political factors influence economic processes and vice versa. The concentration aims to educate mid-career professionals and future public servants to acquire analytical skills, intellectual depth and high public spiritedness, necessary to play a leading role in the increasingly global, interdependent field of policy making. This study area aims to educate mid-career professionals and future public servants to acquire analytical skills, intellectual depth and high public spiritedness. It utilizes and interdisciplinary approach and methodology to explore the theories and policies in the area of global governance, politics, and economics.

Selected Courses Offered:

Economic Integration and Cooperation in East Asia
Foreign Policy Analysis
Globalization and National Identity
International Relations in East Asia
International Economic Organizations and Policies
International Organizations: Norms and Facts
International Political Economy
International Relations and Economic Globalization in 21st Century
Middle Powers in Global Governance
Policies for Development: The OECD Development Center at Work
Theory and Practice of Political Economy
Understanding the World Economy

Ph.D.

Ph.D. Program



KDI School offers Ph.D. programs in Public Policy and Development Policy. The goal of the Ph.D. program is to prepare qualified candidates and help them produce cutting-edge research in their chosen field. The programs also aim to equip students with the skills they need to ascend to leadership positions in the public or private sector.

You, Jong-II
Ph.D. Chair



Curriculum Tailored to Your Research Topic

KDI School encourages Ph.D. students to take the initiative in shaping their own course of study, once they complete the required courses during the first 1-2 years.

Faculty Involvement

KDI School also encourages Ph.D. students to collaborate with the faculty on research projects. Along with an emphasis on supervised research courses, KDI School provides an environment where students work closely with professors.

Expected Target Students

KDI School selects individuals with demonstrated potential for research. Applicants are also expected to have a research topic firmly in hand.

Required Courses

Common Requirements
Econometrics I & Econometrics II
Microeconomics I
Foundations of Public Policy

Field Requirements

Public Policy: Microeconomics II, Advanced Macroeconomic Policy
Development Policy: Development Economics I, Development Economics II





Faculty

Finance and Macroeconomic Policy

Name	Education	Professional Field	Position
SOHN, Wook	Ph.D. Columbia Univ.	Banking / Finance / Monetary Policy	Professor
LEE, Jinsoo	Ph.D. Georgia Institute of Technology	Investment / International Finance	Professor
CHO, Dongchul	Ph.D. Univ. of Wisconsin, Madison	Macroeconomics / International Finance	Professor
CHOI, Tae-Hee	Ph.D. Ohio State Univ.	Accounting	Professor
HAHM, Sang-Moon	Ph.D. Univ. of Chicago	International Finance / Monetary Policy	Professor
KANG, Moon-Soo	Ph.D. Univ. of Minnesota	Macroeconomics / Money and Finance	Visiting Professor
LEE, Young-Ki	D.B.A Boston Univ.	Finance / Economics	Visiting Professor
CHOI, Joong-Kyung	Ph.D. Univ. of Hawaii	Economics	Visiting Professor

Trade and Industry Policy

Name	Education	Professional Field	Position
NAM, Il-Chong	Ph.D. Univ. of Michigan, Ann Arbor	Industrial Organization / Competition Policy	Professor
BAEK, Jisun	Ph.D. Columbia Univ.	Industrial Organization / Microeconomics	Professor
LEE, Siwook	Ph.D. Univ. of Michigan	International Trade / Economic Development	Professor
SHADIKHODJAEV, Sherzod	Ph.D. Korea Univ.	International Trade Law / WTO	Professor
TABAKIS, Chrysostomos	Ph.D. Columbia Univ.	International Trade	Professor
YOO, Yoon-Ha	Ph.D. UC Los Angeles	Macroeconomic Policy / Economic Development	Emeritus Professor
YOO, Jung-ho	Ph.D. Univ. of Wisconsin, Madison	International Trade / Economic Development	Visiting Professor
LEE, Sung-Joo	M.A. International Institute of Public Administration, Paris, France	Trade Policy	Visiting Professor
NAM, Chong Hyun	Ph.D. Univ. of Minnesota	International Trade	Visiting Professor
LIM, Young-Jae	Ph.D. Univ. of Chicago	Law and Economics / Competition Policy	Adjunct Professor



Public Finance and Social Policy

Name	Education	Professional Field	Position
KIM, Taejong	Ph.D. Massachusetts Institute of Technology (MIT)	Public Finance	Professor
MOON, Hyungpyo	Ph.D. Univ of Pennsylvania	Social Welfare Policy	Professor
PAIK, Sung-Joon	Ed.D. Harvard Univ.	Education Policy / Technical Vocational Education and Training	Professor
SHIN, Jaeun	Ph.D. Texas A&M Univ.	Health Economics	Professor
LEE, Ju-Ho	Ph.D. Cornell Univ.	Labor Economics/ Science and Technology Policy	Professor
CHOI, Seulki	Ph.D. Univ. of North Carolina at Chapel Hill	Demography/ Social Quality	Professor
YEON, Hacheong	Ph.D. City Univ. of New York	Comparative & Welfare Economics	Visiting Professor
JEONG, Insoo	Ph.D. State Univ. of New York	Labor Economics/ Public Policy	Visiting Professor
CHOI, Daeyong	Ph.D. Korea Univ.	Policy Evaluation / Regulatory Reform	Visiting Professor
HUR, Kyung-wook	MBA. Stanford Graduate School of Business	Public Finance / International Economy	Visiting Professor
ROH, Keesung	Ph.D. Ohio State Univ.	Economics / Public Finance	Visiting Professor
MICHELL, Anthony	Ph.D. Cambridge Univ.	International Investment / International Marketing	Visiting Professor

Strategic Management

Name	Education	Professional Field	Position
LEE, Seung-Joo	Ph.D. Harvard Univ.	Strategic Management/ Entrepreneurship & Innovation	Professor
JUNG, Kwon	Ph.D. Univ. of Illinois, Urbana-Champaign	Marketing / Business Ethics & Corporate Social Responsibility	Professor
CHO, Yoon Cheong	Ph.D. Rutgers Univ.	Marketing / Customer Relationship Management	Professor
KIM, Ji-Hong	Ph.D. UC Berkeley	International Business	Professor

Regional Development and Environment

Name	Education	Professional Field	Position
CHO, Man	Ph.D. Univ. of Pennsylvania	Urban Economics / Real Estate Finance	Professor
KIM, Dong-Young	Ph.D. Massachusetts Institute of Technology (MIT)	Environmental Planning / Public Dispute Resolution	Professor
KIM, Jeong Ho	Ph.D. Univ. of Michigan	Urban Economics / Environmental Planning	Visiting Professor
YOUNG, Soogil	Ph.D. The Johns Hopkins Univ.	Sustainable Development / Green Growth	Visiting Professor
CHOI, Songsu	Ph.D. Massachusetts Institute of Technology (MIT)	Urban and Regional Planning / Urbanization Policy	Visiting Professor
KIM, Kang Soo	Ph.D. Univ. of Leeds	Transportation / Urban Planning	Adjunct Professor

Global Governance and Political Economy

Name	Education	Professional Field	Position
PARK, Hun Joo	Ph.D. UC Berkeley	Political Economics/ International Relations	Professor
KIM, Kihwan	Ph.D. UC Berkeley	Economics / Economic Development	Visiting Professor
SONG, Daehee	Ph.D. Pennsylvania State Univ.	Economics / Economic Development	Visiting Professor
HAN, Seunghee	Ph.D. Univ. of Virginia	Economics / Development Policy	Visiting Professor
MOON, Hiwhoa	Ph.D. George Washington Univ.	Economics / Politics	Visiting Professor
KIM, Byoung-Joo	Ph.D. Massachusetts Institute of Technology (MIT)	International Relations / Political Science	Visiting Professor

Sustainable Development and International Development

Name	Education	Professional Field	Position
KIM, Joon-Kyung	Ph.D. UC San Diego	Economic Development / Finance / Money & Banking	Professor
CHUN, Hong Tack	Ph.D. Cornell Univ.	Economic Development / Economic Cooperation in East Asia	Professor
KIM, Booyuel	Ph.D. Columbia Univ.	Development Economics / Sustainable Development	Professor
PARK, Jin	Ph.D. Univ of Pennsylvania	Development Economics / Government Reform	Professor
YOU, Jong-Il	Ph.D. Harvard Univ.	Macroeconomics / Development Policy	Professor
LIM, Wonhyuk	Ph.D. Stanford Univ.	Public Enterprise Reform / Economic Development	Professor
HAN, Baran	Ph.D. Cornell Univ.	Development Economics	Professor
WANG, Shun	Ph.D. Univ. of British Columbia	Development Economics / Subjective Well-being	Professor
NAM, Sang-Woo	Ph.D. Massachusetts Institute of Technology (MIT)	Development Economics / Macroeconomics	Emeritus Professor
LEE, Kye-Woo	Ph.D. Michigan State Univ.	Development Economics	Visiting Professor
KIM, Dae ki	MBA., Univ. of Pennsylvania	Economic Development	Visiting Professor
KIM, Yong Taek	Ph.D. Univ. of Michigan	Agricultural Economics	Visiting Professor
SONG, Heeyhon	Ph.D. Syracuse Univ	Macroeconomics / International Economy	Visiting Professor
AHN, Sanghoon	Ph.D. Massachusetts Institute of Technology (MIT)	Economic Growth & Development / International Economy	Adjunct Professor

Public Administration

Name	Education	Professional Field	Position
KIM, Dong-young	Ph.D. Massachusetts Institute of Technology (MIT)	Public Dispute Resolution / Environmental Planning	Professor
KIM, Soonhee	Ph.D. State Univ. of New York at Albany	Public Management and Governance/ Human Resources Management	Professor
LEE, Junesoo	Ph.D. State Univ. of New York at Albany	Public Management	Professor
LEE, Taejun	Ph.D. University of Tennessee, Knoxville	Public Communication	Professor
CHOI, Changyong	Ph.D. Syracuse Univ.	International Development / Public Policy	Professor
LIU, Cheol	Ph.D. Indiana Univ, Bloomington	Fiscal Administration and Budgeting	Professor

Language

Name	Education	Professional Field	Position
YUN, Hai-Young	M.A. London School of Economics, Univ. of London	Public Policy and Public Administration	Visiting Professor
LEE, Gina	M.A. Yonsei Univ	English / Academic Writing	Visiting Professor
LIM, Lisa	Ph.D. Univ. of Rochester	English Education	Visiting Professor
PARK, Jung woo	M.A. Yonsei Univ.	Korean Language	Visiting Professor
RYU, Juhyun	M.A. Ewha Womans Univ	Korean Language	Visiting Professor
LEE, HyunJung	Ph.D. Yonsei Univ	Korean Language	Visiting Professor
LEE, Giyoung	M.A. Hankuk Univ. of Foreign Studies	English / Academic Writing	Visiting Professor

114

Modularization of the Korean developmental experience

Financially supported double degree programs and student exchange programs

1+1

190

Recruiting more than 190 international students from 70 countries

70

2014.7

Designated as the GDLN Global Secretariat in July 2014
First Master of Public Policy program outside the United States accredited by NASPAA

Global Perspective

KDI School instills a global perspective in students to help them develop a global mindset and the capacity to proactively respond to fluctuations in today's international environment.



International Exchange and Career Development Programs



GMP and Exchange Program

The GMP program is a 1+1 study abroad program for Korean mid-level government officials and private sector managers. The first year of study is completed at KDI School while the second year is spent at a partner institution overseas. If a student chooses to be a part of a Master's program at the partner institution, he or she will be eligible to receive dual degrees, one from KDI School and another from the partner institution. KDI School also hosts various foreign exchange programs to help students develop an international perspective. Exchange programs provide the opportunity to not only earn credits from partner schools, but also receive degrees.

Career Development

- **1 on 1 Mentoring Program :**
The 1 on 1 Mentoring Program matches a student with an alumni member who can offer career advice in relevant organizations or fields (on-demand service).
- **Career Development Lecture :**
KDI School invites alumni members in various fields to hold information sessions offering useful tips on employment and career advancement.
- **Cooperation :**
KDI School cooperates with public organization, research institutes, and international organization to provide internship opportunities.
- **Career Center Website :**
Job/internship postings are updated on a daily basis at the Career Center Website.

Capacity Building Center

KDI School's Capacity Building Center (CBC) offers various training programs to government officials from around the world ranging from working-level officials to high-level decision makers. By sharing Korea's phenomenal economic development experience and disseminating its know-how, the CBC strives to enhance the participants' abilities to identify how to achieve meaningful, sustainable development from countries committed to prompting positive change and overall development.



Global Leadership Program

The objective of the program is to enable participants to enhance their contributions towards reaching G20 development goals set forth at the Seoul G20 Summit in 2010. The program has been designed to drive the momentum in implementing action plans at each subsequent G20 Summit.

- Eligibility: Mid to high level government officials from G20 and Non G20 countries
- Type: Executive Program (non-degree)
- Contents: Specialized courses on G20 development agenda issues

SICA Cooperation Program

The SICA Cooperation Program aims to support the establishment of a regional school and its affiliated institute that conducts education and research on socio-economic development plans for SICA member countries. The CBC at KDI School carries out local training programs by building the capacity of policy-makers and sending an advisory group to conduct local consultations in member countries.

Global Development Learning Network (GDLN)

The Global Development Learning Network (GDLN), a World Bank initiative, is a unique partnership of over 120 affiliates in approximately 80 countries providing learning solutions in the field of development using an educational platform featuring web-based outlets and video conferencing facilities. The GDLN Korea Center offers Blended Learning Programs consisting of videoconference sessions and face-to-face training on Korea's developmental experience. As the GDLN Global Secretariat, KDI School facilitates as the GDLN network worldwide.

International Knowledge Cooperation Programs

The CBC uses multiple programs to train and build the capacity among professionals primarily in the public sector overseas. These programs include the following:

- Mid-Career Training Program for Indian Administrative Service (IAS) Officers: Korea Study Tour
- Capacity Building Program for One Belt One Road Initiative (China)
- Saudi Arabia Technical and Vocational Training Corporation (TVTC) Officials Training Program
- Economic Development Strategy for CIS Countries - Public Policy and Management
- Enhancing the Capacity of Officials and Employees of the Office of Government and Central Agencies (Vietnam)
- Thailand High Performance and Potential System (HiPPS) Capability Development Program

Development Research and Learning Network

Building upon the accomplishments of the International Development Exchange Program that supported economic policy-making in developing countries since 1982, the Development Research and Learning Network (DRLN) was launched to promote a 'knowledge partnership' between Korea and its partner countries in the developing world.

Using in-depth research on Korea's own developmental experience, DRLN aims to facilitate Official Development Assistance (ODA) and the implementation of development policies with concerted efforts from partner countries and international organizations.

What originally began as an incubator of global knowledge sharing, DRLN now aims to develop its role as an active agent of change in development policy to help disseminate development know-how, thereby bridging the knowledge gap in the global community.



KSP Modularization of Korea's Development Experience

KSP Modularization of Korea's development experience aims to document, analyze and evaluate Korea's experience over the course of its socio-economic development.

International Research Partnership

The International Research Partnership involves international research collaboration on topics of mutual and global concern for practical and flexible knowledge-sharing activities.

Korea Knowledge Partnership Program with the World Bank Group

The Korea Knowledge Partnership Program is a joint knowledge-sharing program with the World Bank Group for better dissemination of Korea's experience and policy lessons with the global community.

International Development Cooperation Capacity Building Program

The DRLN uses short- and long-term fellowship programs in Korea and other developing countries in Asia as well as international conferences to build the capacity of players in socio-economic development and cooperation.

International Partnership Program

DRLN carries out research projects on transition economies and country-specific capacity building workshops.



Impact Evaluation Research on Development Programs

The Lab carries out rigorous impact evaluation studies jointly with the World Bank and local partners for evaluating the impacts of development programs and for raising awareness in the use of impact evaluation to inform policy decisions and development practitioners.

Research Program in Cliometrics

The Lab newly launched a cliometric study program to focus on Korea's development experiences in 2015.

- Ongoing research covers:
 - (1) Changes in Anthropometric Measures of Wellbeing in Korea: Evidence from Military Records
 - (2) Land Reform and Agricultural Productivity in Korea
 - (3) Foreign Assistance and Economic Development in Korea

Research and Learning Resource Center

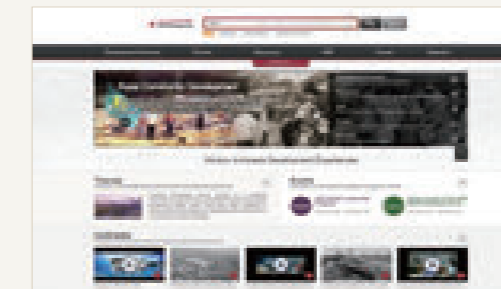
The Research and Learning Resource Center was launched to promote KDI School as a global leader in terms of sharing Korea's knowledge in development.

It collects and selects information related to Korea's development experience and shares it through K-Developedia. The RLRC also aims to further disseminate knowledge through various means including the School's e-Learning platform. Its ultimate goal is to promote knowledge partnership between Korea and its partner countries in the developing world.

K-Developedia (kdevelopedia.org)

K-Developedia is a comprehensive repository of Korea's development experience, launched by KDI School of Public Policy and Management in 2012. It includes last 70 years of Korea's development experiences on various socio-economic issues and outcomes of ODA carried out since 1982 with developing countries. The database contains more than 35,000 full-texts and multimedia contents (i.e. photos and videos), and provides free links to documents on Korea's development.

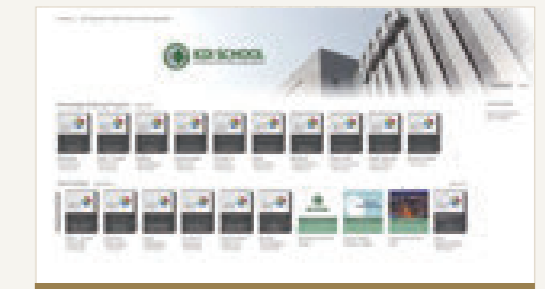
It aims to provide open access to resources on Korea's development experience in an effort to be recognized as a complete research and knowledge repository. K-Developedia targets decision makers in developing countries and researchers in the development field based on the motto of 'sharing knowledge for shared growth'. The website has six categories - Development Overview, Themes, Resources, KSP, Statistics, Events.



e-Learning Contents and Platform

The e-Learning Team is dedicated to creating education-related e-Learning contents not only for the KDI School students, but also for the general public including those working in the development sector worldwide.

The e-Learning contents cover numerous subjects including the Korean development experience and other development and policy issues, with the ultimate goal of offering a ubiquitous learning environment by maximizing the advantages of an online learning platform. Various lectures and programs held at the KDI School are made into e-Learning contents using latest e-Learning techniques and are delivered to its intended audience through the KDI School's online learning management system, the eKDIS and the worldwide platform iTunes U, a free online courses platform offered by Apple.





41%
12% **32%**
3% **12%**

Domestic student body with diverse affiliations
 (public officials 41%, public corporations 32%, private corporations 12%, college graduates 12%, NGO/IGO 3%)

50%

More than 50% of the student body consists of international student

No.1

Most extensive international partnership network among graduate-level schools in Korea

119
119
1500

countrise

Education for international students affiliated with key ministries in 119 countries

More than 1,500 international alumni members

Worldwide Network

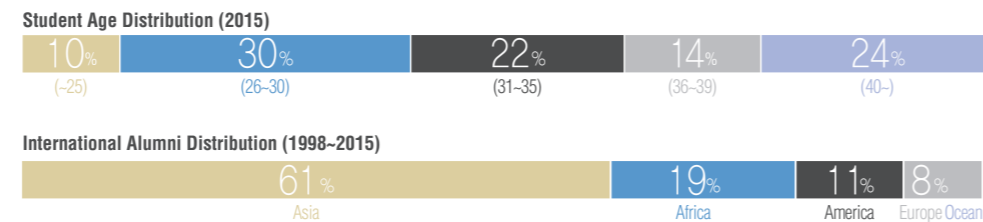
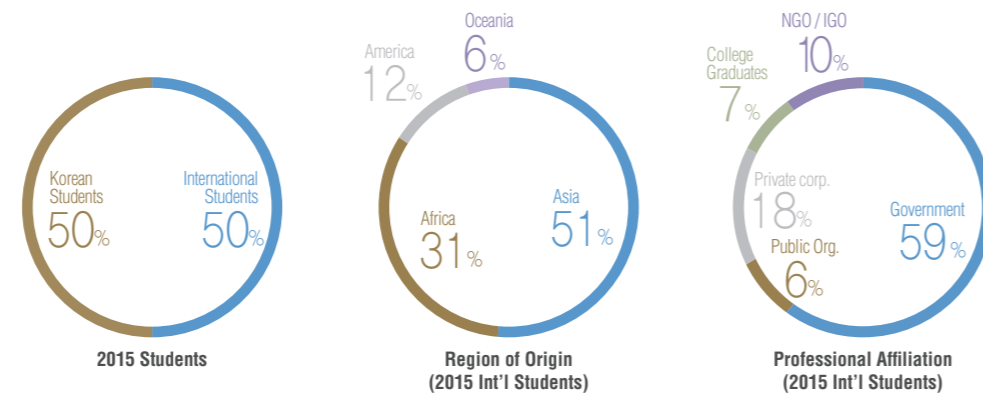
KDI School has an extensive global network with world class partner institutions. KDI School also has a diverse alumni network all over the world. Both platforms are crucial in training the next generation of global leaders.

KDI School Network Student & Alumni Profile

KDI School is home to a vast student and alumni network that stretches all over the world. Students come from a variety of backgrounds including Korean alumni members in government ministries, public organizations, private corporations, the finance sector, media corporations, and NGOs. The network is equally diverse for foreign alumni counterparts with current and former students from key government ministry officials in 119 countries. Such an extensive network creates synergy and helps KDI School and its students build a truly diverse support structure that provides mutual support in various fields.

Diverse Alumni Composition

- A global alumni network with more than 1,500 foreign alumni members from 119 countries from Master degree programs since.
- The alumni network functions as a key human resource factor in building relationships with developing countries. It helps KDI School form a close-knit network with key government officers which supports the expansion of domestic corporations in overseas markets.



International Alumni Categorized by Nationality (1998-2015)

Region	Country	Total	Region	Country	Total	Region	Country	Total	Region	Country	Total
AFRICA	Algeria	11	AMERICA	Antigua and Barbuda	1	ASIA	Afghanistan	20	EUROPE	Albania	1
	Botswana	1		Belize	6		Armenia	3		Bosnia-Herzegovina	2
	Burundi	3		Bolivia	4		Azerbaijan	9		Bangladesh	45
	Cameroon	11		Brazil	7		Bhutan	16		Cambodia	71
	Congo	1		Chile	3		China	84		Czech Republic	21
	DR Congo	3		Colombia	15		Costa Rica	7		Hungary	7
	Cote d'Ivoire	7		Dominican Republic	8		East Timor	4		Poland	2
	Egypt	16		Ecuador	7		Georgia	6		Romania	10
	Eritrea	5		El Salvador	11		India	17		Serbia and Montenegro	5
	Ethiopia	56		Grenada	3		Indonesia	65		Slovakia	9
	Gambia	5		Guatemala	14		Iraq	53		Belarus	2
	Ghana	33		Haiti	1		Iran	10		France	2
	Kenya	20		Honduras	9		Israel	1		Germany	5
	Lesotho	1		Jamaica	4		Japan	3		Greece	2
	Liberia	2		Mexico	10		Jordan	1		Italy	1
	Madagascar	2		Nicaragua	2		Kazakhstan	39		Lithuania	8
	Malawi	21		Panama	3		Kyrgyzstan	21		Moldova	1
	Morocco	2		Paraguay	3		Laos	28		Malaysia	14
	Mozambique	3		Peru	10		Maldives	14		Mongolia	45
	Namibia	1		St. Lucia	2		Myanmar	39		Nepal	19
Nigeria	14	Suriname	1	Pakistan	44	Palestine	6				
Rwanda	9	Canada	14	Philippines	32	Sri Lanka	19				
Senegal	2	USA	18	Taiwan	1	Tajikistan	4				
Sierra Leone	2	Australia	2	Thailand	18	Turkey	2				
Somalia	1	Fiji	7	Turkmenistan	2	Uzbekistan	62				
South Africa	4	New Zealand	2	Vietnam	79	Yemen	6				
South Sudan	1	Papua New Guinea	3								
Sudan	6	Solomon Islands	3								
Tanzania	28										
Tunisia	5										
Uganda	12										
Zambia	7										
Zimbabwe	20										

**TOTAL 1,515
(119 Countries)**

Worldwide Network



KDI School Network

To help KDI School students respond more effectively against the ever-evolving global environment, KDI School has a truly vast cooperative network with academic, government, and international organizations overseas. In fact, KDI School has the largest partnership network (50 academic institutes from 22 different countries as of 2016) among graduate-level schools in Korea.

Overseas partner universities and organizations

Nation	Institution
	Cornell University
	Duke University
	Hawaii Pacific University (HPU)
	Hult International Business School (Boston)
	Indiana University
	Michigan State University (MSU)
	New York University (NYU)
	Pardee Rand Graduate School
	Rutgers University (State University of New Jersey)
	Saint Louis University (SLU)
	Syracuse University
USA	University at Albany, State University of New York (SUNY)
	University of California at Berkeley
	University of California at San Diego (UCSD)
	University of Chicago
	University of Colorado at Denver
	University of Illinois at Urbana-Champaign (UIUC)
	University of Kentucky (UK)
	University of Missouri-Columbia
	University of Southern California (USC)
	University of Washington
Guatemala	Universidad de San Carlos de Guatemala
Netherlands	Erasmus University Rotterdam
Germany	Leipzig Graduate School of Management, Handelshochschule (HHL)
Mexico	Fundacion Universidad de las Americas, Puebla
Myanmar	Yangon University of Economics

Nation	Institution
Bangladesh	BRAC University
Belgium	Katholieke Universiteit Leuven (KU Leuven)
Brazil	Escola de Administracao Fazendaria (ESAF)
Sweden	Jonkoping University
Singapore	National University of Singapore (NUS)
	Lancaster University Management School (LUMS)
United Kingdom	University of Birmingham
	University of Nottingham
	University of Sussex
Egypt	American University in Cairo
Italy	SDA Bocconi School of Management
Japan	National Graduate Institute for Public Studies (GRIPS)
	Fudan University
China	Chinese Academy of Governance
	Tsinghua University
Kazakhstan	Academy of Public Administration
Canada	University of British Columbia (UBC)
Kyrgystan	Academy of Public Administration
Thailand	Thammasat University
	Institut Supérieur du Commerce(ISC)
France	Institut Supérieur de Commerce International de Dunkerque (ISCID)
	ESSEC Business School
Australia	Australian National University (ANU)
	University of Sydney

50 Institutions / 22 countries

Partner Schools



24 hours

Student study rooms and library reading rooms open 24/7

Extensive Support

The most valuable asset to a school is none other than its students. Using cutting-edge facilities and equipment for academic/research activities as well as an extensive range of scholarships, KDI School ensures the best possible environment not only for learning but also for everyday life.

1997-12

KDI School of Public Policy and Management established

100%

100% of the student body receiving scholarships

45 years

Sharing intellectual know-how accrued at KDI over the past 45 years



Kim Daria
Russia
Ph.D. (PP)

Extensive

Support

KDI School in Sejong City

Located in the heart of Sejong Multifunctional Administrative City, KDI School's new campus offers world-class education in the field of development and public policy. It takes full advantage of its proximity to central government institutions and national research institutes. KDI School has been able to establish the perfect academic environment by providing students with up-to-date research and educational facilities, as well as all-new dormitory.

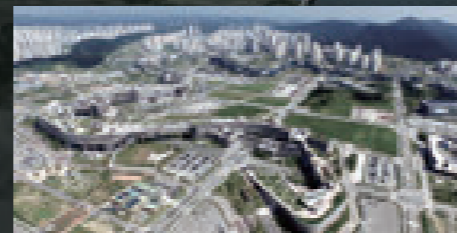
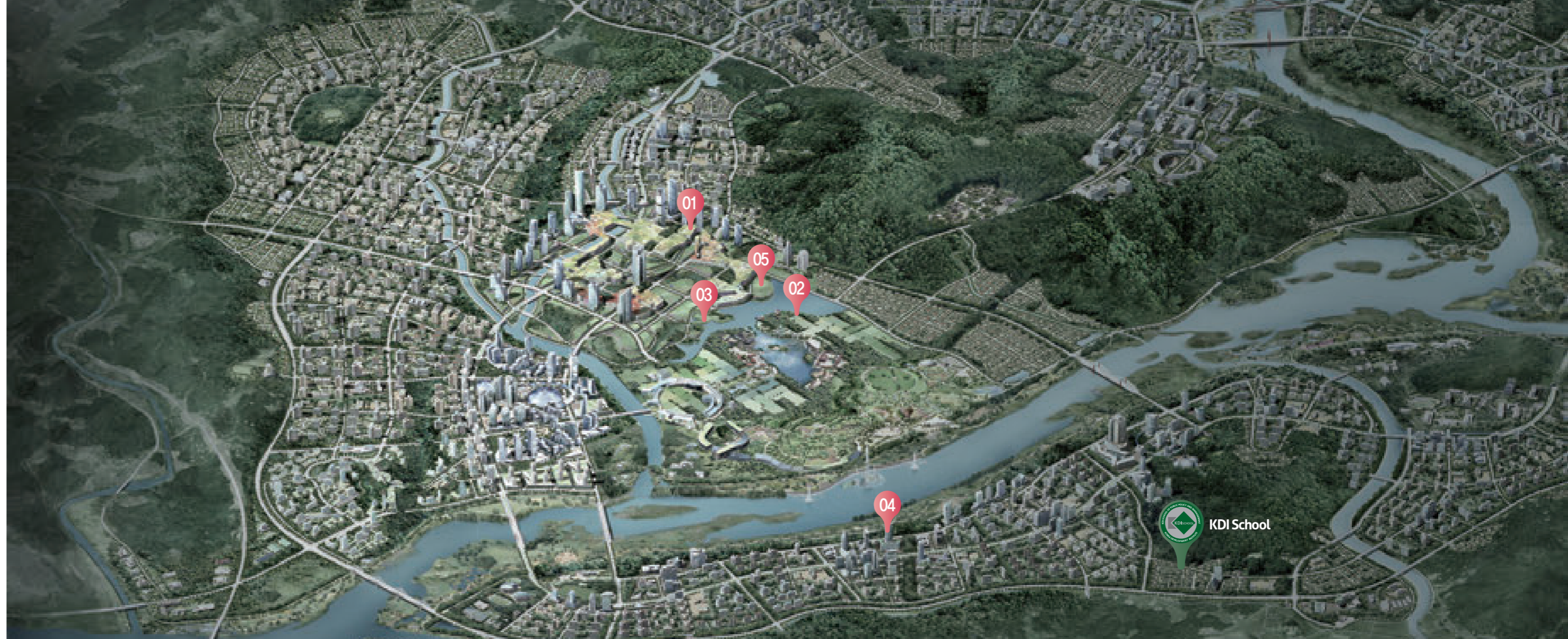
Key Institutions in Sejong City

Government Institutions

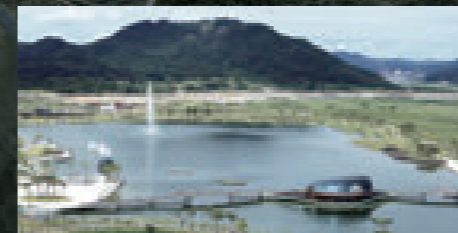
Prime Minister's Office, Ministry of Strategy and Finance, Fair Trade Commission, Ministry of Land, Infrastructure and Transport, Ministry of Environment, Ministry of Agriculture, Food and Rural Affairs, Minister of Education, Ministry of Culture, Sports and Tourism, Ministry of Trade, Industry and Energy, Ministry of Health & Welfare, Ministry of Employment and Labor, Ministry of Patriots & Veterans Affairs, Ministry of Government Legislation, National Tax Service, National Emergency Management Agency

National Research Institutes

Korea Research Institute For Human Settlements, Korea Development Institute, Korea Institute of Public Finance, National Research Council for Economics, Humanities and Social Sciences, Science and Technology Policy Institute, Korea Research Institute for Vocational Education & Training, Korea Labor Institute, Korea Institute for International Economic Policy, Korea Institute for Industrial Economics & Trade, The Korea Transport Institute, National Youth Policy Institute, Korea Institute for Health and Social Affairs, Korea Environment Institute, Korea Research Council of Fundamental Science & Technology, Korea Research Council for Industrial Science & Technology



01 | Government Complex



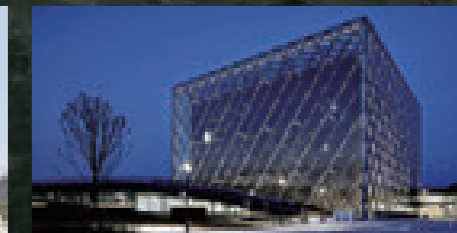
02 | Sejong Lake Park



03 | The National Library of Korea, Sejong



04 | Sejong City Hall



05 | The Presidential Archives

Campus Life & Information

Campus with consolidated research-educational facility

The campus is located in Sejong Metropolitan Autonomous City, a multifunctional administrative city where central government agencies and national research institutes are concentrated. As the educational arm of the Korea Development Institute, the #1 think tank in Asia, KDI School offers premier educational opportunities. The students will have access to the intellectual know-how of KDI, accumulated over the last 45 years, as well as benefit from the studies of world-class researchers by directly communicating with them.

Ultra-modern facilities

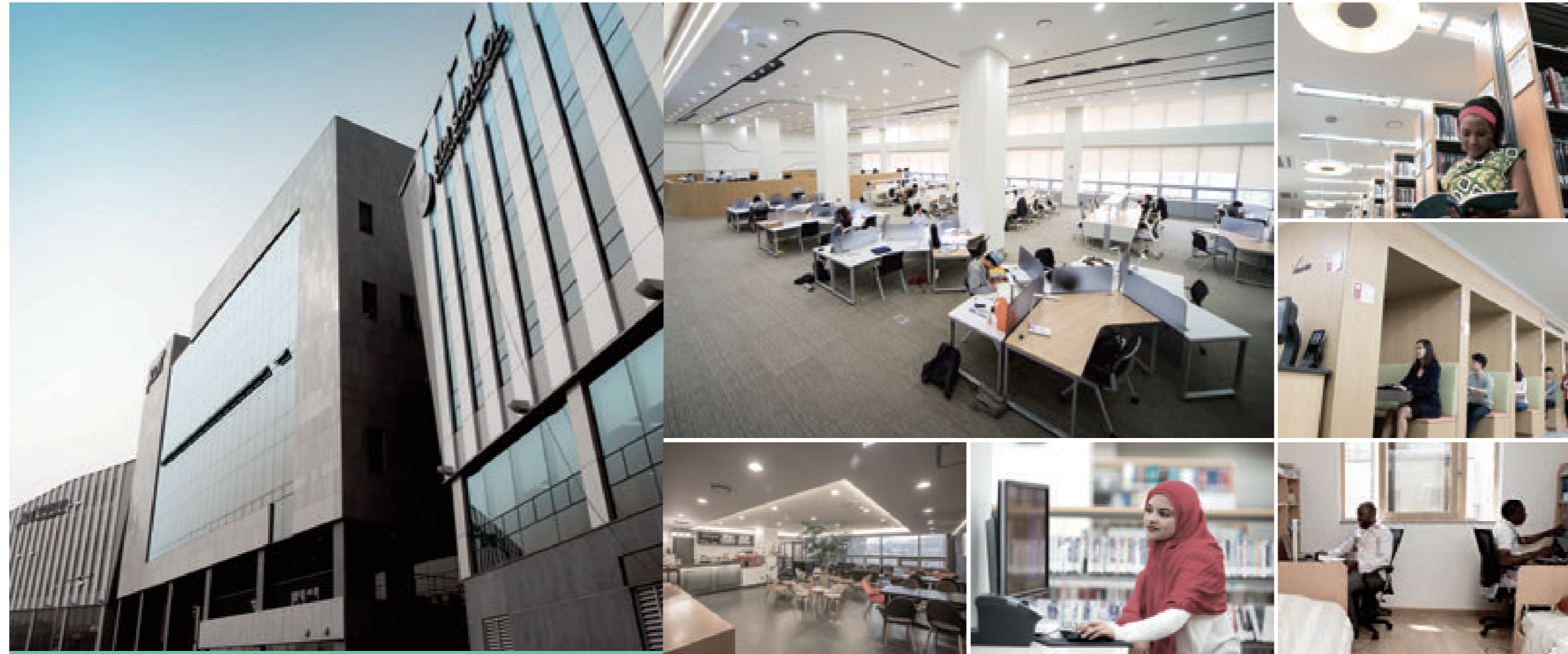
The new campus is an ideal educational environment for full-time students by providing them with a brand new dormitory, as well as student labs and learning facilities optimized for research and education.

Geographical convenience

The campus is located within easy access to the rest of South Korea. It takes 2 hours from Seoul, 3 hours from Busan, 2 hours from Gwangju to reach the campus. Osong Station is the nearest KTX station to KDI School, and BRT (Bus Rapid Transit) runs between Osong Station and KDI School.

Environment-friendly campus

It will be an excellent opportunity for students to take a break away from the bustle of a city for a year and solely focus on their studies.



Library

The Library provides comprehensive resources specializing in various fields including business, economics, and policy for research activities. The library is also affiliated with the KDI Library which further adds to the amount of resources available to students. Additionally, students can access information conveniently using the digital library featuring an integrated search function.

Archives

The school's archives preserve all school publications, records, visual records, donations, and memorabilia. It encourages students to use these resources on the archives website whenever they need to.

Computer Lab

The computer lab is open to students 24 hours a day. It provides high-performance computers, printers, scanners and high-speed internet access.

Student Chambers

Student chambers are open 24 hours a day. Each chamber includes a desk and locker so students can use them depending on their needs.

Dormitories

The dormitories are located in the campus, providing students with an environment-friendly home all year round. Each room comes with beds, desks, closets, beddings and toilet (shower rooms). Other facilities including laundry rooms, lounges, and the kitchen are communal and shared among the residents.

Other Facilities

The student lounge is equipped with a TV, a VCR, and computers. Diverse sports facilities are offered on campus (gym, soccer field, basketball court, ping-pong room, tennis court, shower rooms, etc). VOBISCUM is at once a cafe and a vocational rehabilitation business for critically disabled people by Ministry of Health and Welfare and Korea Disabled People's Development Institute.

Campus Life Social Activities



Cultural Events & Field Trips

To help international students understand Korean culture and its society better, KDI School offers a wide range of cultural events such as the field trip to Cheongwadae (the Blue House) and Gyeongbokgung Palace, Korean Folk Village, the 3rd Tunnel, and other local festivals.



Korea Field Research and Study

During the summer vacation, international students are offered a number of opportunities to visit key historic and cultural sites, Korea's leading corporations including POSCO and Hyundai Heavy Industries, as well as the chance to visit local government offices.

Club Activities

KDI School Clubs give students an opportunity to interact with other students through different activities. Student Clubs are open to not just club members but also other interested school members. KDI School encourages students to join various clubs to enrich their experience at KDI School.



Sports Day

On Sports Day, KDI School students, faculty, and staff members step away from their classrooms and offices for a chance to get each other know a little better through athletic events. It's a great chance to build a sense of camaraderie, fellowship, and friendship.



Home Visiting Program

To provide an opportunity for international students to bolster their friendship and networks in the Korean community, KDI School pairs international students with Korean host families. Hosts may either choose to invite international students to their homes or arrange a family outing with them.



International Food Festival

The International Food Festival is a special occasion to celebrate diversity among KDI School's students. Most international students prepare distinct native dishes from their home country for everyone at KDI School to enjoy. It provides a platform for international student groups to present their unique customs and culture.

My KDI School Experience Alumni Recollection



William Andrey Rodriguez
Costa Rica /
Associate Human Resources Policy Officer,
United Nations

When I look back in time, I realize how fortunate I was to pursue my Master's degree at the KDI School of Public Policy and Management. While I was able to enjoy the most amazing, eye-opening cultural experience of my life, the School offered me the possibility to explore and learn from many areas of knowledge through a careful selection of courses, a proficient faculty that encouraged student participation and an outstanding learning environment with excellent infrastructure and fully supportive administrative staff. The diverse environment fostered at the School made the experience even more enriching because it provided the opportunity to listen to varied perspectives from students of many nationalities and fields of work. Ultimately, KDI School has presented me with the necessary tools to face challenging situations at my work, which have been a significant element in my career progression. I am truly thankful to KDI School for all the positive impact it had on my life.



Sayuri Bayona
Peru /
Coordinator for Trade Remedies
and Competition Policy,
Ministry of Foreign Trade and Tourism

While I was in Korea, learning was not limited to lectures and reading materials. I found that the genuine learning experience was also brought by different perspectives of my classmates. The cultural diversity at the KDI School was without comparison. Friends from Thailand, Indonesia, Uzbekistan, Bangladesh, Nepal, Bhutan and particularly Korea formed an integral part of my every day interactions. Upon returning to Peru, I applied for an opening at MINCETUR, where they were looking to hire a specialist in bilateral affairs with Asia-Pacific countries. The Ministry was beginning Free Trade Agreement (FTA) negotiations with China, had launched a Joint Feasibility Study for FTA between Peru and Korea, and had Japan on its mind for future trade negotiations. The in-depth experience garnered at the KDI School regarding the Korean and Asian economies enabled me to attain the post I so much desired. While I played only a small role in the negotiations with China in 2008, I was appointed as General Coordinator for the Peru-Korea FTA negotiations in 2009, working side-by-side with Peru's Chief Negotiator. My familiarity with the Korean economy helped me understand Korea's position at the negotiating table, and allowed me to come up with suggestions compatible with both parties' interests and concerns.



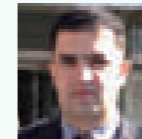
Marliana Yanti
Indonesia /
Chief Section of Vehicle
Periodical Inspection Facilities,
Ministry of Transportation

I work for the central government whose primary tasks are formulating policy, providing guidance and guidelines related to land transportation for local governments. What I have learnt from KDI School has helped me enrich my understanding and my point of view into a certain problem and understand problem solving not only from technical aspect but also from a social aspect and economical aspect. This became a great asset for me in completing a given task related to formulating policies. KDI School also helped me broaden my knowledge about the outside world.



Ambachew Mekonnen
Ethiopia /
Minister of Construction,
Ministry of Construction

My stay in Korea during the academic year 1999-2000, was a wonderful experience. It changed the way I look at things, and has also inspired me to work harder under the Korean spirit of "We can do it!". I have been talking a lot about the miraculous economic performances of South East Asia particularly that of Korea and how there has been a rapid economic growth coupled with a decline in income inequality. Even during my PHD study in the UK, half of my thesis was about the best experiences that 11 East Asian countries including Korea had at the core of the benchmarking bloc. This shows just how my mind is persistently influenced by the inspiration at the KDI School. Hence, undoubtedly, one of the main contributing factors towards my career evolution as an economist and succeeding politician are the inspirational lessons I received from the KDI School. While our country is striving to follow the Korean model of development, amongst my colleagues, I was also identified as a man that talked a lot about the decencies, diligence, thriftiness, and hierarchical loyalty of Koreans with mutual respect and an overall peaceful mindset.



Khalilullah Totakhail
Afghanistan /
Operations Manager,
UNICEF Country Office

The education at KDI School has been highly rewarding both in my professional and personal lives. The success stories and achievements I have after graduation from KDI School are several. I got the promotion from Human Resources Deputy Team Leader post with United Nations Development Program (UNDP) to Operations Manager with United Nations Children's Fund (UNICEF) that is a three level higher post in UN common system in Afghanistan, and this was only possible for me to secure after I pursued my master studies with KDI School. I have no doubt that my successes and achievements I enjoyed after my graduation from KDI School were significantly owed to the fact that I developed my competencies and attainment of my master studies at KDI School.



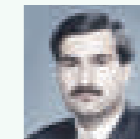
Tomas Antonio Guardia
Panama /
Ministry of Foreign Affairs,
Ambassador of Panama

Since the completion of the coursework for the MPP at KDI School in December 2014 and reincorporating back to the Ministry of Foreign Affairs (MOFA) of Panama from this official leave for studies, many opportunities opened up for me at MOFA, taking into account the academic experience in such prestigious institute of South Korea. I must underline that the KDI School experience of meeting and sharing with such a diverse student body has been especially helpful to my experience as Ambassador in Egypt. I very much thank KDI School for having awarded me the G20 Global Leaders Fellowship that has not only enlightened me personally but also enriched my professional experience and advanced my career at the Ministry of Foreign Affairs of Panama.



Zoltan Pozsar
Hungary /
Senior Advisor,
U.S. Department of the Treasury

As I remember my time at the KDI School, I owe deep gratitude to the wonderful group of professors. Their help was instrumental in landing a position as a macro analyst in the U.S. upon my graduation in 2002. When I joined the Markets Group of the Federal Reserve Bank of New York in 2008 to head up the analysis of securitization and wholesale funding markets for the Bank, I often thought how lucky I was to have learned about balance sheet dynamics in accounting, finance and macroeconomics at the KDI School. Lessons I took from the professors' approach about balance sheets were crucial to map and document the shadow banking system for the Bank. With this background, I moved to International Monetary Fund in 2011 as a visiting scholar analyzing the shadow banking system.



Ahmad Mukhtar
Pakistan /
Officer,
UNCTAD

The most prominent impact the KDI School had on my professional life was made by an exposure to the international trade and WTO issues. The lessons I took from the KDI School went beyond the material in books. Professors' individual interest in every student guided us throughout the semester. The real urge to embark upon my present career was actually triggered by their lectures and advice. At present I am an established professional in the field and I always try to keep in context what I learned at the KDI School: not just professional knowledge on the subject but more importantly how the KDI School encouraged me to fly to the highest point in my career.



Scholarship Opportunities

Global Ambassador Scholarship

Benefits: full tuition and monthly stipend for most recipients
Eligibility: all overseas candidates are welcome to apply
Offering period: spring and fall admissions

Seoul G20 Global Leader's Fellowship

Benefits: full tuition, monthly stipend*, and round-trip airfare
Eligibility: division head-level or minimum 6 years of working experience in the public sector
Offering period: spring and fall admissions
 *Seoul G20 Global Leader's Fellowship offers a relatively higher monthly stipend.

KOICA Scholarship

Benefits: full tuition, monthly stipend, and round-trip airfare
Eligibility: government officials recommended by KOICA
Offering period: fall admissions
 * The KDI School selects KOICA Scholars from among the applicants recommended by KOICA.

NIIED GKS-KGSP (Korean Government Scholarship Program)

Benefits: full tuition, monthly stipend, and round-trip airfare
Eligibility: candidates from countries designated by NIIED
Offering period: fall admissions

KOICA-MDI Scholarship

Benefits: full tuition, monthly stipend, and round-trip airfare
Eligibility: Myanmar citizens who hold a bachelor's degree in economics or related fields
Conditions: work for MDI for at least 2 years after graduation
Offering period: spring and fall admissions

FSS-KFB-KDIS Scholarship

Benefits: full tuition, monthly stipend, and round-trip airfare
Eligibility: government finance officers (banking sector only) from Asian Countries
Offering period: spring admissions

The Korea-LAC Scholarship Program (KLSP)

Benefits: full tuition, monthly stipend, and round-trip airfare
Eligibility: government officials from Latin America and Caribbean region
Offering period: fall admissions
 * The KDI School selects KLSP scholars from among the applicants recommended by the IDB.

POSCO Fellowship

Benefits: full tuition, monthly stipend, and round-trip airfare
Eligibility: government officials from Asia
Offering period: spring and fall admissions
 * The KDI School nominates POSCO Asia scholars from among the eligible applicants of the Global Ambassador Scholarship.

KOGAS Global Fellowship

Benefits: full tuition, monthly stipend, and round-trip airfare
Eligibility: candidates recommended by KOGAS
Offering period: fall admissions
 * The KOGAS nominates potential candidates to KDI School.

Colombo Plan Scholarship

Benefits: full tuition, monthly stipend, and round-trip airfare
Eligibility: government officials from 20 Colombo-Plan member countries
Offering period: spring admissions
 * The KDI School selects Colombo Plan scholars from among the applicants recommended by the Colombo Plan

Admissions for International Students

2017 Admissions

Open House

- Date : September 24th, 2016
- Time : 10:30am ~ 12:00pm
- Venue: KDI School

*The Open House for 2017 Admissions will be broadcasted live from KDI School.

Contact Us

Admissions Office
E- mail: internationaladmissions@kdis.ac.kr
Tel: +82-44-550-1281/ 1220
Fax: +82-44-550-1223
Admissions Website: admissions.kdischool.ac.kr
Facebook: <http://www.facebook.com/KDISofficial>

International Applicants Qualification

Applicants who are Korean origins must meet one of the following:

1. A foreign national whose parents also have foreign nationals
2. An applicant who has completed at least 16 years of education (elementary, middle, high school, and undergraduate) in a foreign country

Admission Requirements

- For Master's program: a bachelor's or an equivalent degree
- For Ph.D. program: a master's or an equivalent degree
- Ability to take classes in English
- Eligibility requirements for scholarship (if applicable)
- Work experience preferred (particularly in public sector)

Procedure



Application Schedule*

Procedures	2017 Spring Admissions (All Programs)	2017 Fall Admissions (Full-time Masters Only)
Application Deadline	Late Oct, 2016	Late May, 2017
Final Result Notification	Early December, 2016	Early July, 2017
Semester Start	Early February, 2017	Early September, 2017

* The schedule is subject to change.

Required Documents

Submission of online application (<http://admissions.kdischool.ac.kr/>) and required documents must be completed by deadline.

No.	Documents	Master	Ph.D.
1	Online Application Submission	required	required
2	Statement of Purpose (must use the official form)	required	required
3	Official transcript from undergraduate institution(s)	required	required
4	Certified Diploma from undergraduate institution(s)	required	required
5	Official transcript from graduate institution(s)	If applicable	required
6	Certified Diploma from graduate institution(s)	If applicable	required
7	Recommendations	Two	Three
8	Two Photos (3cm X 4cm) or Photo File Upload	required	required
9	Copy of Passport	required	required
10	TOEFL, TOEIC, IELTS, or TEPS score report *	strongly recommended	required
11	Employment Verification**	If applicable	If applicable
12	Dissertation Research Proposal	not required	required
13	Writing Sample in English	optional	optional
14	GRE score report	not required	optional

* Candidates who received their bachelor's or higher degree from an English-speaking country may submit a certified copy of 'certificate of medium of instruction' issued by their university instead.

** Applicants of Seoul G20 Global Leader's Fellowship must submit Employment Verification to prove their eligibility (Eligibility: Applicants must be currently employed in the public sector (1) as a division head-level official or (2) with minimum 6 years of working experience in the public sector)

Important Notice

Applicants should follow instructions provided in application guideline which can be downloaded from admissions website <http://admissions.kdischool.ac.kr> during admissions period. Online application and required documents must be submitted by deadline. Submitted documents will not be returned.